

SPECIFICATION

CUSTOMER : _____

MODULE NO.: **LC-CCFL3-5V**

1. GENERAL DESCRIPTION

This CCFL inverter was developed for 50 – 150 mm CCFL lamp with 2 to 3 mm diameter.

2. INPUT CHARACTERISTICS

Parameter	Symbol	Min	Nom	Max	Unit	Remark
Input Voltage	V _{in}	4	5.0	6	V	
Input Current	I _{in}	300	—	800	mA	V _{in} =5V
Input Power	P _{in}	1.5		4.0	W	V _{in} =5V

3. Output Characteristics

Parameter	Symbol	Min	Nom	Max	Unit	Remark
Output Voltage	V _o		300		V _{rms}	V _{in} =5.0V
Start Voltage	V _v		550	650		
Tube Current	I _L	4	5	7	mA	V _{in} =5.0V
Working Frequency	f	36	39	41	KHz	
Life Time	Hrs.		40,000		Hrs	DC 5.5V continue

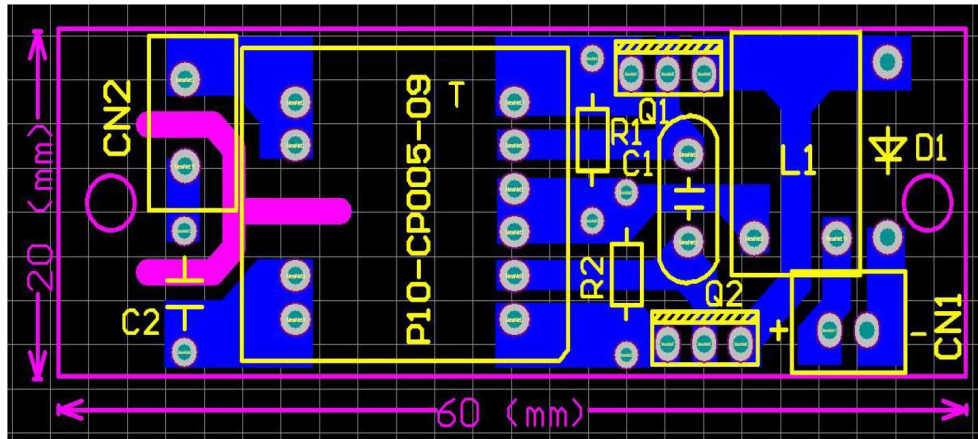
NOTE: All conditions are at 25°C ambient unless otherwise specified.

4. General Specification

Operating Temperature: - 0°C ~ 50°C
Storage Temperature: -20°C ~ 60°C
Operating Humidity: -10 ~ 80%RH
Storage Humidity: -10 ~ 93%RH

Safety clearance shall be more than 2 mm /KV

5. Mechanical Dimension



Height max. 13mm

6. Connection

